

# Campus Facilities

---

## Campus Center

2011; 63,240 sq. ft.

---

- Admissions Offices
- Administration Offices
- Center for Student Success
- Campus Store
- Campus Bistro/Cafeteria
- Muth Electric Commons
- Medical Simulation Lab
- Programs/Instructor Offices:
  - ◊ Culinary Arts
  - ◊ Human Services Technician
  - ◊ Licensed Practical Nursing
  - ◊ Medical Assistant
  - ◊ Medical Laboratory Technology
  - ◊ Medical Office Professional
  - ◊ Radiation Therapy
  - ◊ Radiologic Technology
  - ◊ Registered Nursing
  - ◊ Speech-language Pathology Assistant

## Energy Training Center

2009; 43,000 sq. ft.

---

- Programs/Instructor Offices:
  - ◊ Electrical Utilities & Substation Technology
  - ◊ Power Line Construction & Maintenance
  - ◊ Utilities Technologies
  - ◊ Wind Turbine Technology

## Muth Electric Technology Center

2003; 48,600 sq. ft.

---

- Student Lounge (24x7 access)
- Fitness Center (24x7 access)
- Office of Technology
- Technology Help Desk
- Maintenance Offices
- Programs/Instructor Offices:
  - ◊ General Education
  - ◊ Accounting/Business Management
  - ◊ Information Systems Technology
  - ◊ Wi-Fi & Broadband Technologies
  - ◊ SD Leadership Academy

## Nordby Trades Center

2013; 155,151 sq. ft.

---

- Programs/Instructor Offices:
  - ◊ Agricultural Technology
  - ◊ Architectural Design & Building Construction
  - ◊ Automation Controls/SCADA
  - ◊ Automation Engineering Technology
  - ◊ Diesel Power Technology
  - ◊ Electrical Construction & Maintenance
  - ◊ Geospatial Technologies
  - ◊ Heating & Cooling Technology
  - ◊ Light Truck Technology
  - ◊ Natural Gas Technology
  - ◊ Power Sports & Marine Technology
  - ◊ Precision Ag Technology
  - ◊ Welding & Manufacturing Technology



## Driver Training Center

Leased 2009; 5,000 sq. ft.

---

- **Programs/Instructor Offices:**
  - ◇ CDL
  - ◇ Professional Truck Driving

## Light Truck Training Center

Purchased 2016; 7,270 sq. ft.

---

- **MTC's only off-campus facility**
- **Programs/Instructor Offices:**
  - ◇ Light Truck Technology



Mitchell Technical College is a modern, multi-building technical college located on an 80-acre campus adjacent to Interstate 90.

August 1, 2021

# Mitchell Technical College Campus Facilities

1800 E Spruce Street – Main Campus

1400 E Spruce Street – Campus Tech Apartments

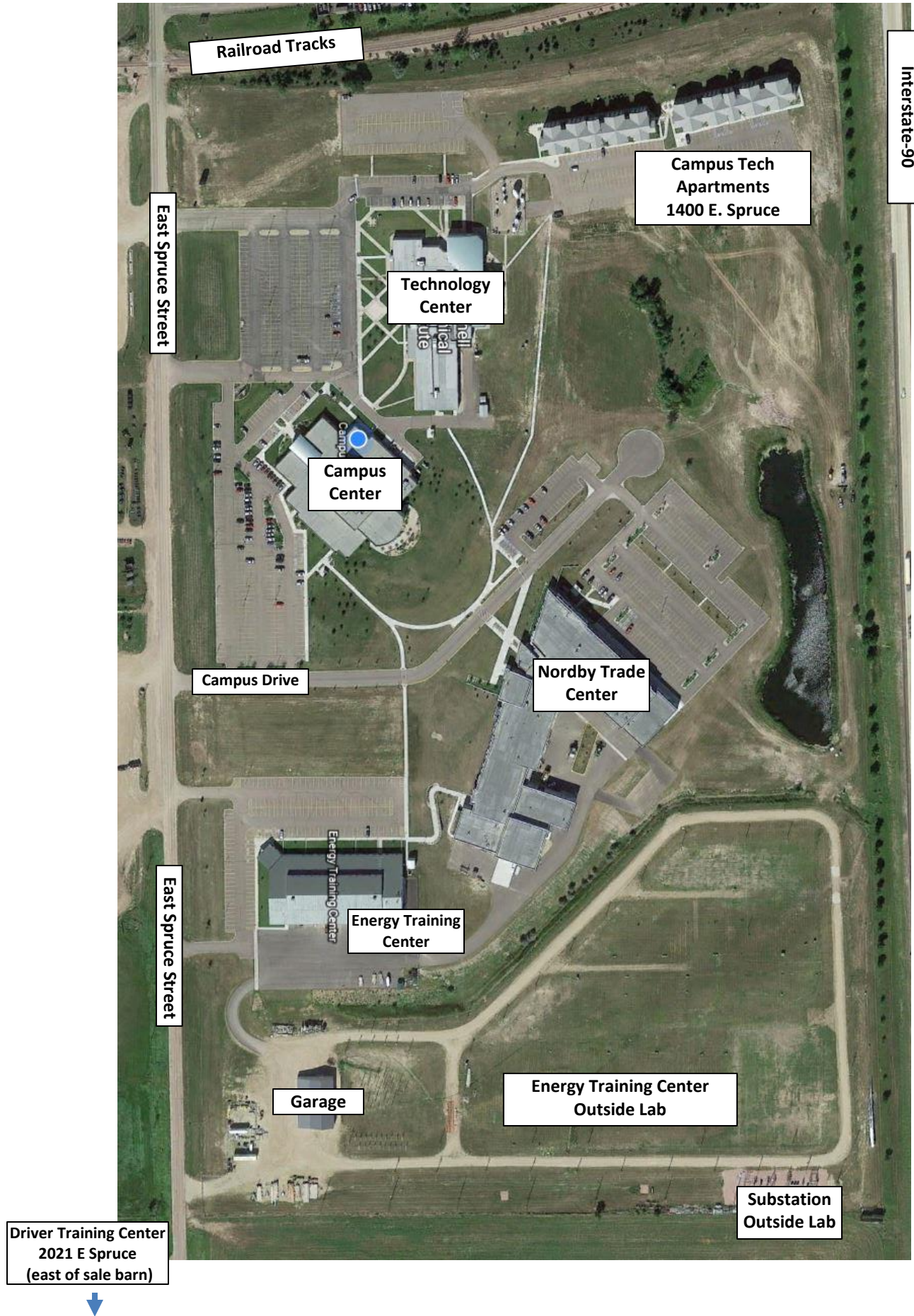
2021 E Spruce Street – Driver Training Center

115 S Pepsi Street – Diesel Power Light Truck Bldg

40625 W Havens – MTC Land Lab (leased fields)

August 1, 2021

Note – MTI Diesel Power – Light Truck Building is located at 115 Pepsi Street – west of Graphic Packaging



August 1, 2021

**Driver Training Center - 2021 E Spruce Street**  
(immediately east of Mitchell Livestock Auction)



**NORTH**



August 1, 2021

# Diesel Power Tech Building – 115 S Pepsi Street (immediately west of Graphic Packaging)



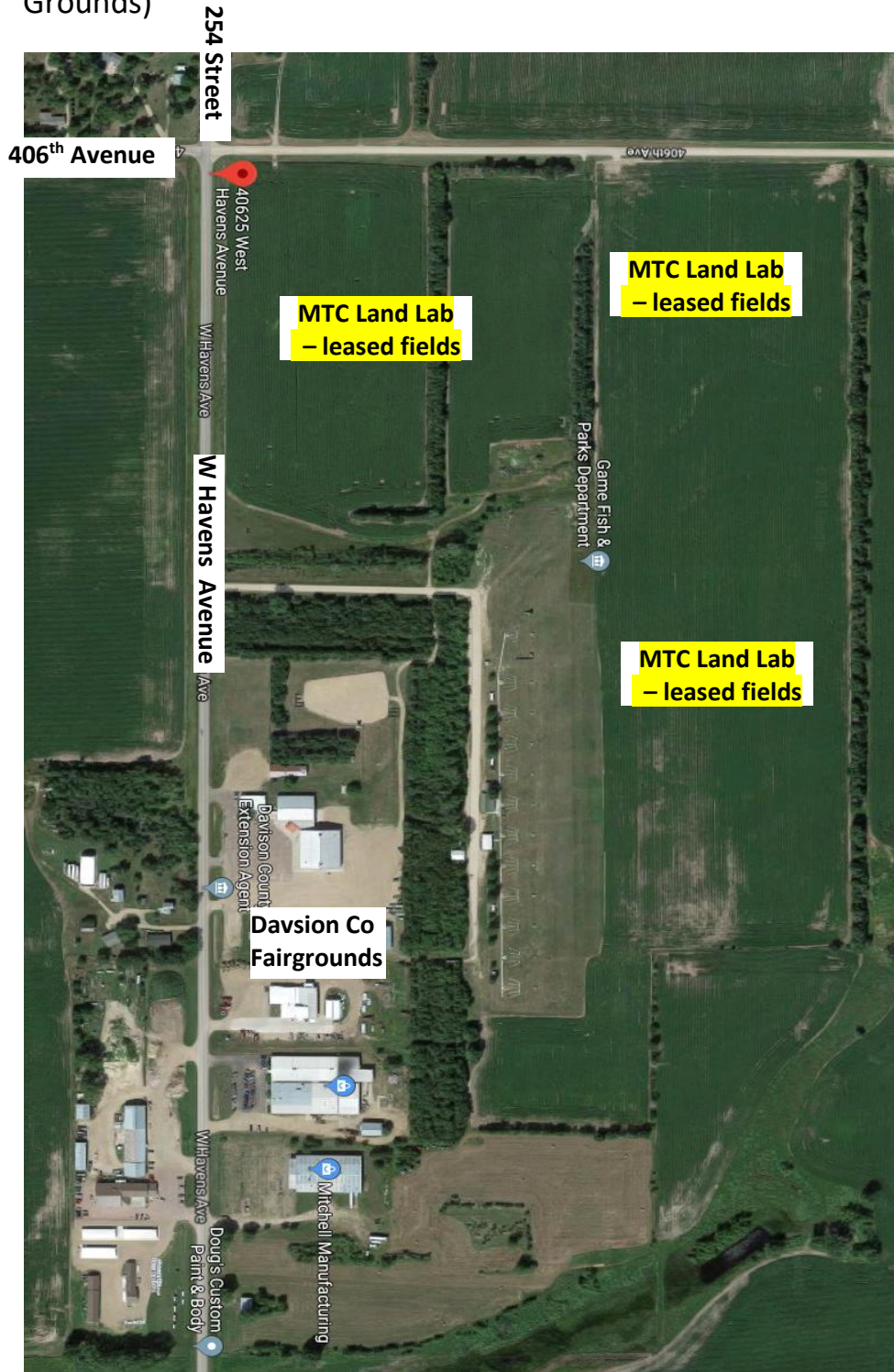
NORTH



August 1, 2021

# MTC Land Lab (leased property) 40625 West Havens

(Davison County property – fields to west and north of Davison County Fair Grounds)



NORTH